

PLEATED FILTER ELEMENTS IN 304/316 STAINLESS STEEL WIRE CLOTH

CLARO STEEL

A totally regenerable filter element with high mechanical strength and chemical resistance.

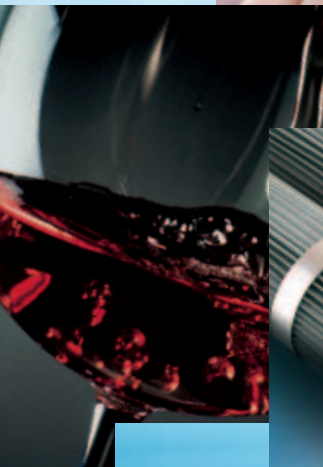
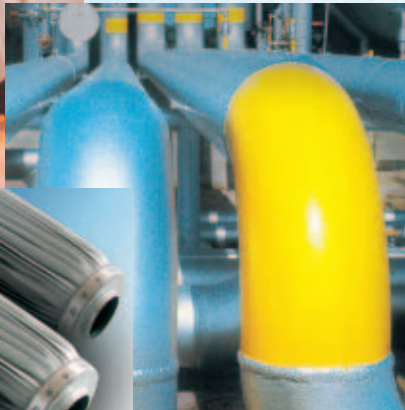
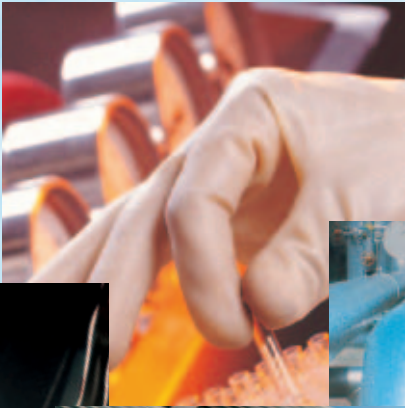
CLARO STEEL filter cartridges are designed for critical filtration applications that do not require absolute or particularly fine filtration grades.

These cartridges consist of pleated 304 or 316 stainless steel cloth, mated to a drain mesh to protect the pleats from collapsing. No adhesives or resins are used in assembly, as all bonds are welded.

Available in a variety of commonly used sizes with filtration grades ranging from 10 to 750 microns, with a good degree of solid separation efficiency.

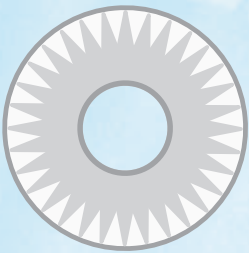
The CLARO STEEL filter cartridge is completely regenerable and inert. It offers a viable alternative to conventional disposable separation systems, thus cutting the cost of consumables. The highly porous structure offers a high degree of permeability and, as a result, low Δp values even at high flow rates. The superiority of CLARO STEEL filter elements is complemented by their excellent mechanical strength, for greater durability and reduced operating costs.

These filter elements are particularly suitable for the filtration of high temperature (680°F), high viscosity, aggressive or corrosive fluids and gases, such as cryogenic and hydraulic fluids, solvents and steam.



CLARO STEEL

A totally regenerable filter element with high mechanical strength and chemical resistance.



PLEATED STEEL WIRE CLOTH



FILTRATION SOLUTIONS

IONEX LLC - 33131 Miami (FL) USA

DISTRIBUTOR FOR EUROPE:

AB Arnaldo Bassi srl

Via Don G. Calabria, 30 - 20132 Milan - Italy
Tel. +39.02.25.66.081 - Fax +39.02.25.66.486

www.ionexfilters.com

TECHNICAL SPECIFICATIONS

- made entirely of 304 or 316 stainless steel
- assembled with no adhesives or resins, non-fibre releasing
- high mechanical strength
- pulsed micro-tig welding
- extensive chemical compatibility, maximum resistance to stress and high temperatures,
- completely regenerable, long service life

OPERATING CONDITIONS

Max. continuous operating temp.	680°F@21 psi (360°C@1,5 bar)
Max. operating pressure (Δp)	85 psi@75°F (6 bar@25°C)

RECOMMENDED FLOW RATE (H₂O@68°F/10" – 1.0 psid)

GRADE	1cP	25cP	70cP
10 μ m	1800	600	400
20 μ m	2300	1300	1050
30 μ m	2500	1500	1400
40 μ m	2500	1600	1500
75 μ m	2500	1800	1600
100 μ m	3000	1800	1600
150 μ m	3000	1800	1600
250 μ m	3500	2000	1800
350 μ m	3500	2000	1800
500 μ m	3500	2000	1800
750 μ m	3500	2000	1800

FILTRATION GRADES

10 – 20 – 30 – 40 – 75 – 100 – 150 – 250 – 350 – 500 - 750 μ m

FILTRATION AREA

0.20 m² per 10" element

MATERIALS

filter mesh	304 or 316L Stainless steel
supports	304 or 316L Stainless steel
centre core	316L Stainless steel
end caps	316L Stainless steel
seals	silicone (standard), Viton®, EPDM, Buna N, PTFE

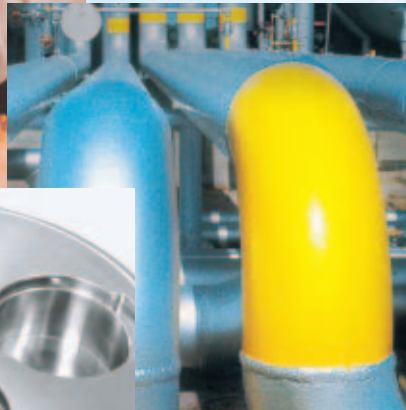
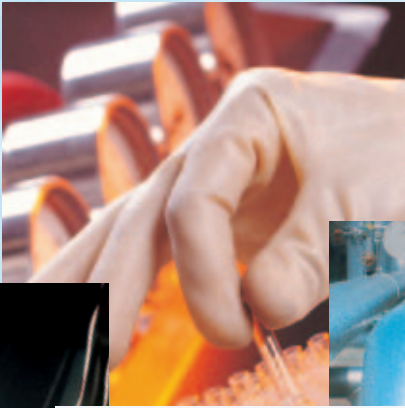
SEALING METHOD

Pulsed micro-tig welding

DIMENSIONS

Length	10" (254 mm), 20" (508 mm) 30" (762 mm), 40" (1016 mm)
External diameter:	2.55" (65 mm)
Internal diameter:	1.02" (26 mm)

SANITARY LIQUID FILTER HOUSINGS



HOUSINGS

Just as the choice of the right filter element is a determining factor in achieving safe, reliable filtration, so is the choice of housing used, as these components are by no means a minor detail and are an integral part of the whole filtration process.

Our housings meet the exacting quality standards in terms of hygiene and safety demanded by all companies operating with critical conditions in both the pharmaceutical and beverage industries. These housings are made entirely of 316L stainless steel, with highly polished internal and external surfaces (max. internal roughness < 0.8 micron), with no sharp contours or inaccessible areas that could capture dirt or contaminants, and are easy to clean and sterilise. Built to last, these components are exceptionally easy to use and maintain. At the end of filtration, they can be drained rapidly and completely to prevent the formation of stagnant liquid residue at the bottom of the vessel. Tested to withstand operating pressures well above those specified by current legislature, these housings are built to guarantee a perfect cartridge seal, even under demanding conditions. The dome is held in position with a high breaking strain V-Band Clamp or Bold Clamps.

Available in a variety of heights from 10" (25 cm), 20" (50 cm), 30" (75 cm) to 40" (100 cm), these housings can hold from 1 to 30 cartridges code 7. On request, we can customise housings for different connections or even manufacture housings to your own unique specifications. Housings are normally supplied as the ADVANCED (ADV) version, which includes two inlet/outlet butterfly valves, a sanitary valve for sampling/venting, a drain ball valve and a pressure gauge assembly in SS 316L with sight glass and ball valve for gas inlet.



TECHNICAL SPECIFICATIONS

CODE	DESCRIPTION
VESSEL RANGE	HSG - SANITARY
No. OF CARTRIDGES	1-30 x 10" - 20" - 30" - 40"
END FITTINGS	226 - CODE 7
MATERIAL	SS 316 L / 1.4404

STANDARD SEALS	EPDM
INTERNAL FINISH	MECHANICALLY POLISHING
MAXIMUM ROUGHNESS	RA<0.8 MICRONS
EXTERNAL FINISH	MECHANICALLY POLISHING

Standard equipment includes:

1 PRESSURE GAUGE ASSEMBLY IN SS 316L

Consisting of:

- 1 stainless steel Ø 100 mm, glycerine filled pressure gauge - scale up to 6 bar
- 1 sight glass
- 1 gas inlet valve with 1/4" BS threaded female fitting
- 1 vent ball valve with 1/2" (Ø 12 mm) hose adaptor for gas inlet

The assembly is fitted with BSP 1/2" female and seal in PETP or VITON®

2 INLET/OUTLET BUTTERFLY VALVES IN SS316L

HSG1	1.0" CLAMP or Ø 25 mm	DIN 11851
HSG3	1 1/2" CLAMP or Ø 40 mm	DIN 11851
HSG5 - HSG8	2.0" CLAMP or Ø 50 mm	DIN 11851
HSG12 - HSG19	3.0" CLAMP or Ø 65 mm	DIN 11851
HSG24 - HSG30	4.0" CLAMP or Ø 85 mm	DIN 11851
Seals in EP		

1 SANITARY VALVE IN SS316L FOR SAMPLING/PRESSURE RELEASE

- BSP 1/2" (1/4" for HSG1) female with 1/2" (Ø 12 mm) hose adaptor for quick and complete drainage of the housing and condensate drainage after sterilisation procedures.

1 DRAIN BALL VALVE IN SS 316L

HSG1	BSP 1/4" with Ø 9 mm quick coupling
HSG3	BSP 1/2" with Ø 21 mm quick coupling
HSG5 - HSG8	BSP 1/2" with Ø 21 mm quick coupling
HSG12 - HSG19	BSP 1/2" with Ø 21 mm quick coupling
HSG24 - HSG30	BSP 1/2" with Ø 21 mm quick coupling
Seals in EP	

- A BASIC version is also available with no equipments to allow you to customise the housing to your needs and fit it with the accessories of your choice.



FILTRATION SOLUTIONS

IONEX LLC - 33131 Miami (FL) USA

DISTRIBUTOR FOR EUROPE:

AB Arnaldo Bassi srl

Via Don G. Calabria, 30 - 20132 Milan - Italy

Tel. +39.02.25.66.081 - Fax +39.02.25.66.486

www.ionexfilters.com